

Looking to develop your community engagement skills? The new two day Planning for Real<sup>®</sup> training course could be the answer.

From June 2013, we will be running two-day training courses on Planning for Real<sup>®</sup>. These provide a fantastic opportunity for individuals to receive intensive training on the renowned Planning for Real<sup>®</sup> process.



#### Tell me more about Planning for Real<sup>®</sup>

Planning for Real<sup>®</sup> is a highly participative community planning tool which is used to involve people in having a say about issues in their local area. Based on a 3D model of a local area, Planning for Real<sup>®</sup> can be applied to a variety of contexts and different scales.

From community-led action planning, neighbourhood planning, master-planning to service reform, transport projects, estate regeneration and Big Local projects, it is the perfect tool for engaging with communities.

Empowering local residents to have their say is at the heart of Planning for Real<sup>®</sup>. This practical and consensus-building technique allows communities to establish their own needs and solutions, rather than having these imposed by others.



#### About the course

Participants will learn how to plan and facilitate a Planning for Real<sup>®</sup> community engagement programme. By the end of the course participants will be able to:

- Explain the Planning for Real<sup>®</sup> process and its possible applications in supporting community consultation
- Construct a scale model of a local area
- Promote Planning for Real<sup>®</sup> to key stakeholders and make the practical arrangements
- Use a model and the Planning for Real<sup>®</sup> process to identify issues of concern and possible solutions
- Prioritise issues of local concern and work with a group to construct a basic action plan
- Understand how Planning for Real<sup>®</sup> can help you to achieve your project's objectives.

### Who is this course for?

This course has been designed with the public and voluntary sectors in mind. It will be relevant for anyone who works with communities and is looking to better understand their diverse needs, such as:

Council staff (including planning, housing and transport teams, councillors), voluntary sector staff, community group representatives, organisations involved in Local Strategic Partnerships, people involved in neighbourhood planning, registered social landlords, NHS and police, fire and ambulance services.

Consultants and anyone looking to use Planning for Real® on a fee earning basis will not be eligible for this training. The ethos behind Planning for Real® is that people are trained in order for them to use the process on a no-fee basis within their local communities.

### When?

For the latest dates and locations, please visit our website [planningforreal.org.uk](http://planningforreal.org.uk). You can also contact us on 0121 568 7070 or email [info@planningforreal.org.uk](mailto:info@planningforreal.org.uk)

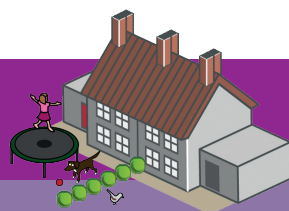
### Why should I attend?

This is a fantastic opportunity for individuals to receive intensive training as part of a small group on the renowned Planning for Real® process. Planning for Real® is trademarked and only people who have had official Planning for Real® training are able to go on and use the technique with communities.

The cost of this course is £400 plus VAT (excluding accommodation). On completion of the training participants will be eligible for discounted rates on Planning for Real® resources as well as guidance and support.

To ensure the quality of the training experience the number of participants on each course will be limited to 16. Places will be allocated on a first come, first served basis so please book early to avoid disappointment.

## Course programme



### Day one

10:00 Coffee and registration.

#### 10:15 Morning session:

Ice breaker / warm up exercise; introduction to Planning for Real®; stakeholder analysis including identifying best methods of contact work, promotion and publicity, and opportunities to engage; making the Planning for Real® model in role; explanation / advice on practicalities; discussion and feedback.

1:00 Lunch.

#### 1:45 Afternoon session:

Skills survey; pin boards – what and when used; using the model and identifying issues; recording suggestions and explanation of input and analysis; on-going advice about practicalities and examples given of how and when Planning for Real® used.

4:00 Feedback, summary and evaluation.

4:30 End of day one.

### Day two

9:15 Feedback and review of first day.

#### 9:30 Morning session:

Prioritising results; creating the action plan; finding best solutions to identified problems and developing timelines; demonstration of other practical tools i.e. ideas walls, trees; discussion and feedback.

12:00 Lunch.

#### 12:45 Afternoon session:

Applying learning to real project situations – small group work around specific projects so participants can undertake detailed planning of their own projects; presentation of action plans.

3:00 Feedback from the course and evaluation.

3:30 Course ends.

**Booking forms are available from [planningforreal.org.uk](http://planningforreal.org.uk) or you can contact us on 0121 568 7070 or email [info@planningforreal.org.uk](mailto:info@planningforreal.org.uk)**